

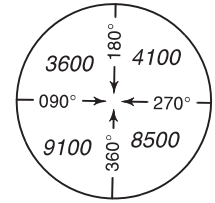
**INSTRUMENT APPROACH CHART - ICAO**  
**AD ELEV 49 FT**  
 HEIGHTS RELATED TO THR RWY 26R ELEV 19 FT

ATIS 126.800  
 TWR 118.825  
 APP/RAD 121.200  
 GND 121.800

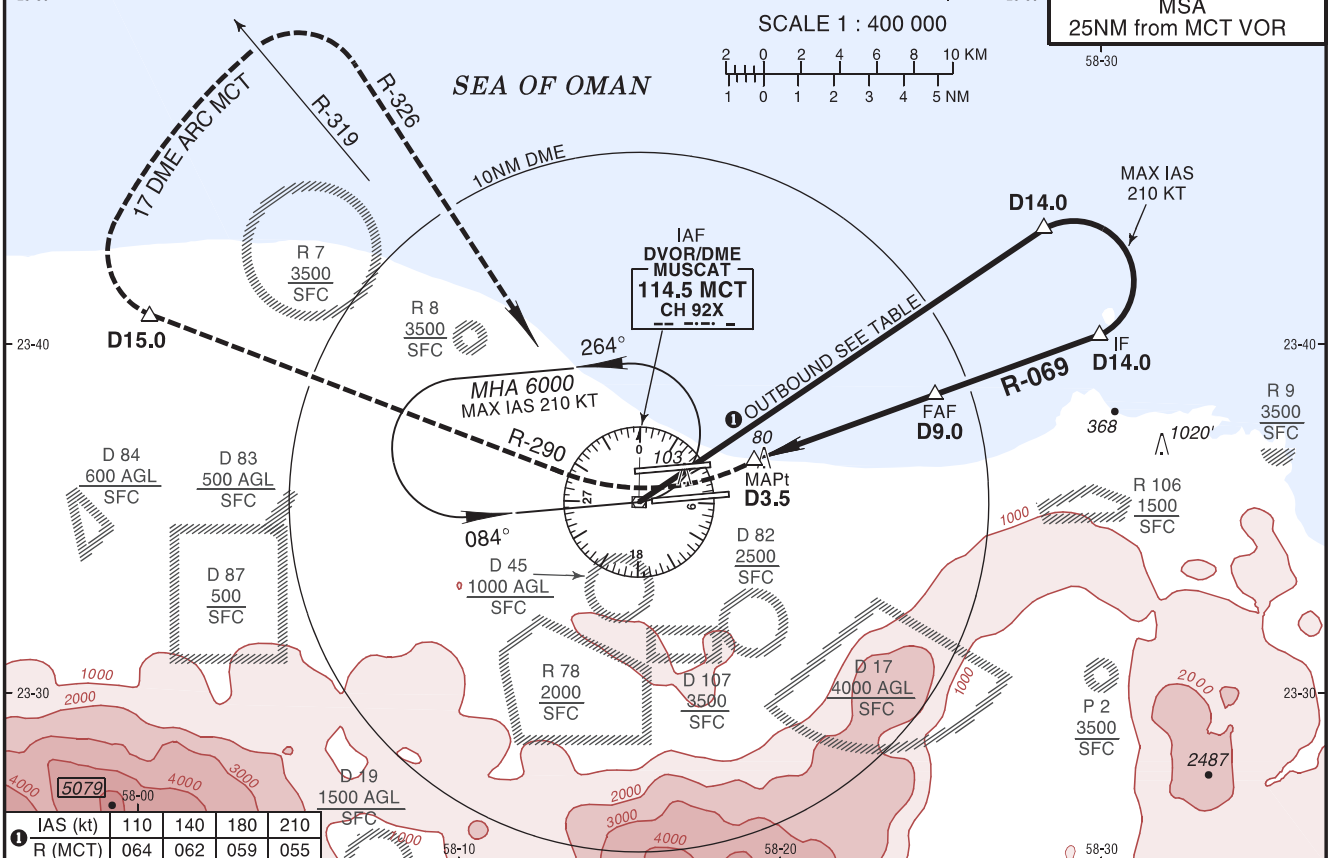
**MUSCAT/Muscat Intl OMAN**  
 VOR RWY 26R

ACFT ON FINAL MAY BE SUBJECT TO UNAUTHORIZED TARGETING BY LASER POINTING DEVICES OPERATED BY MEMBERS OF THE PUBLIC. PILOTS EXPERIENCING SUCH TARGETING MUST IMMEDIATELY ADVISE ATC, WHO WILL TAKE THE NECESSARY REPORTING ACTION.

BEARINGS ARE MAGNETIC  
 DISTANCES IN NM  
 ALTITUDES AND ELEVATIONS IN FEET  
 HEIGHTS IN FEET



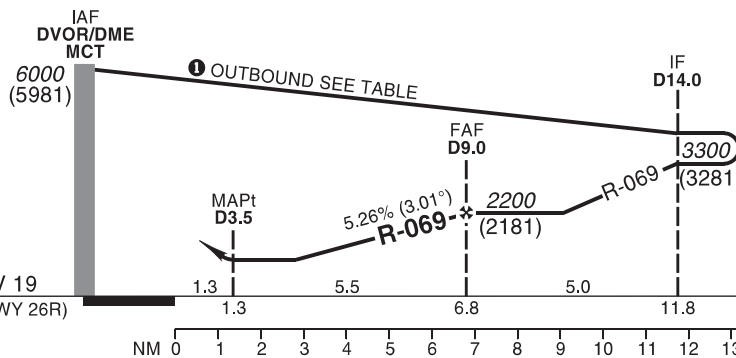
SCALE 1 : 400 000



IAS (kt)	110	140	180	210
R (MCT)	064	062	059	055

**TA 13000**

**MISSED APPROACH:**  
 Turn RIGHT to follow R-290 till D15.0. Turn RIGHT to follow 17 DME ARC MCT (MAX IAS 220 KT). Turn RIGHT to follow R-326 direct to VOR, climb at 6000 to join the holding.



STRAIGHT-IN APPROACH		A	B	C	D	ADVISORY INFORMATION ONLY							
VOR	OCH	510				MCT DME	4	5	6	7	8		
	MDA(H)	530 (510)				ALT (HGT)	660 (640)	980 (960)	1300 (1280)	1620 (1600)	1940 (1920)		
	VIS	1500m		1600m		GS	kt	80	100	120	140	160	180
CIRCLING (HAA)* ②		A	B	C	D	FAF-MAPt ③	min:s						
Not Authorized						ROD: 5.26%	ft/min	428	534	641	748	855	962

② Circling not authorized.  
 ③ Timing not authorized for defining the MAPt.  
 DME or RADAR required.  
 Final Approach track move 15° from RCL.